

MEGANE

8 Electrical equipment

80D LIGHTING

Fault finding: Interior lights	80D - 1
Fault finding: Storage compartment	80D - 13
Fault finding: Lower door lights	80D - 16
Fault finding: Headlight beam adjustment	80D - 26
Fault finding: Steering column switch	80D - 32

LIGHTING

Fault finding: Interior lights

80D

Customer complaints

THE FRONT COURTESY LIGHT DOES NOT OPERATE AT ALL	ALP 1
THE FRONT COURTESY LIGHT DOES NOT COME ON WHEN A DOOR IS OPENED	ALP 2
THE FRONT COURTESY LIGHT DOES NOT GO OFF WHEN THE DOORS ARE CLOSED	ALP 3
THE FRONT COURTESY LIGHT DOES COME ON CONTINUOUSLY	ALP 4
THE REAR COURTESY LIGHT DOES NOT OPERATE AT ALL	ALP 5
THE REAR COURTESY LIGHT DOES NOT COME ON WHEN A DOOR IS OPENED	ALP 6
THE REAR COURTESY LIGHT DOES NOT COME ON CONTINUOUSLY	ALP 7
THE FRONT AND REAR COURTESY LIGHTS DO NOT OPERATE AT ALL	ALP 8
THE FRONT AND REAR COURTESY LIGHTS DO NOT COME ON WHEN A DOOR IS OPENED	ALP 9
THE FRONT AND REAR COURTESY LIGHTS DO NOT GO OFF WHEN THE DOORS ARE CLOSED	ALP 10
THE FRONT AND REAR COURTESY LIGHTS DO NOT COME ON CONTINUOUSLY	ALP 11

LIGHTING

Fault finding: Interior lights

80D

Fault finding charts

ALP 1	THE FRONT COURTESY LIGHT DOES NOT OPERATE AT ALL
--------------	---

NOTES	Use a 12 V/5 W standard warning light bulb. Use the Wiring Diagrams Technical Note, Mégane 2 ph2. Check that the fuses are sound.
--------------	---

Remove the front courtesy light (see MR 364, Mechanical systems, 81B, Interior lighting, Courtesy light). Check with the warning light bulb for + 12 V between connections MAM and BPT of component 213.

Does the test bulb illuminate?

yes



Check that the interior light bulb(s) are in good condition.
--

Are the bulbs in good condition?

yes



Replace the interior lights.

no



Replace the faulty bulbs.

no



Check the continuity on connection BPT between components 213 and 645.
--

Is the continuity good?

yes



Run fault finding on the UCH (see 87B, Passenger compartment connection unit).
--

no



There is a fault on connection BPT between components 645 and 213. If there is a repair procedure (see Technical Note 6015A, Repairing wiring: precautions for repair), repair the wiring, otherwise replace it.

LIGHTING

Fault finding: Interior lights

80D

Fault finding charts

ALP 2	The front courtesy light does not come on when a door is opened
--------------	--

NOTES	Use a 12 V/5 W standard warning light bulb. Use the Wiring Diagrams Technical Note, Mégane 2 ph2. Check that the fuses are sound. Check that the courtesy light operates continuously before applying this ALP. If it does not, refer to ALP1.
--------------	---

Remove the front courtesy light (see MR 364, Mechanical systems, 81B, Interior lighting, Courtesy light). Open a door and check with the warning light bulb for + 12 V between connections 13E and BPT of component 213.
Does the test bulb illuminate?

yes



Replace the interior lights.

no



Check the continuity and insulation from + 12 V of connection 13E between components 213 and 645.

Is connection 13E sound?

yes

Run fault finding on the UCH (see **87B, Passenger compartment connection unit**).

no

There is a fault on connection 13E between components 645 and 213.
If there is a repair procedure (see **Technical Note 6015A, Repairing wiring: precautions for repair**), repair the wiring, otherwise replace it.

LIGHTING

Fault finding: Interior lights

80D

Fault finding charts

ALP 3	The front courtesy light does not go off when the doors are closed
--------------	---

NOTES	Use a 12 V/5 W standard warning light bulb. Use the Wiring Diagrams Technical Note, Mégane 2 ph2.
--------------	--

Note:

It is normal that the interior lights do not go out when the doors are being closed, but several seconds afterwards (time delay).

Remove the front courtesy light (see **MR 364, Mechanical systems, 81B, Interior lighting, Courtesy light**).
Close all the doors and wait 30 seconds. Check with the warning light bulb for + 12 V between connections 13E and BPT of component 213.

Does the test bulb illuminate?

no



Replace the interior lights.

yes



Check the continuity and insulation from earth of connection 13E between components 213 and 645.

Is connection 13E sound?

yes



Run fault finding on the UCH (see **87B, Passenger compartment connection unit**).

no



There is a fault on connection 13E between components 645 and 213.
If there is a repair procedure (see **Technical Note 6015A, Repairing wiring: precautions for repair**), repair the wiring, otherwise replace it.

LIGHTING

Fault finding: Interior lights

80D

Fault finding charts

ALP 4	THE FRONT COURTESY LIGHT DOES NOT COME ON PERMANENTLY
NOTES	Use the Wiring Diagrams Technical Note, Mégane 2 ph2. Check that the fuses are sound. Check that the front courtesy light comes on when a door is opened before applying this ALP. If it does not, refer to ALP1.
There is a fault on earth MAM of component 213. If there is a repair procedure (see Technical Note 6015A, Repairing wiring: precautions for repair), repair the wiring, otherwise replace it.	

LIGHTING

Fault finding: Interior lights

80D

Fault finding charts

ALP 5	The rear courtesy light does not operate at all
--------------	--

NOTES	Use a 12 V/5 W standard warning light bulb. Use the Wiring Diagrams Technical Note, Mégane 2 ph2. Check that the front courtesy light operates correctly before applying this ALP. If it does not, refer to ALP8.
--------------	---

Remove the rear courtesy light (see MR 364, Mechanical systems, 81B, Interior lighting, Courtesy light). Check with the warning light bulb for + 12 V between connections MAM and BPT of component 300.
--

Does the test bulb illuminate?

yes

no

Check that the interior light bulb(s) are in good condition.

Are the bulbs in good condition?

yes

no

Replace the interior lights.

Replace the faulty bulbs.

There is a fault on connection BPT between components 213 and 300. If there is a repair procedure (see **Technical Note 6015A, Repairing wiring: precautions for repair**), repair the wiring, otherwise replace it.

LIGHTING

Fault finding: Interior lights

80D

Fault finding charts

ALP 6	The rear courtesy light does not come on when a door is opened
--------------	---

NOTES	Use a 12 V/5 W standard warning light bulb. Use the Wiring Diagrams Technical Note, Mégane 2 ph2. Check that the rear courtesy light operates continuously before applying this ALP. If it does not, refer to ALP5. Check that the front courtesy light comes on when a door is opened before applying this ALP. If it does not, refer to ALP9.
--------------	--

Remove the rear courtesy light (see MR 364, Mechanical systems, 81B, Interior lighting, Courtesy light). Check with the warning light bulb for + 12 V between connections 13E and BPT of component 300.
Does the test bulb illuminate?

yes



Replace the interior lights.

no



There is a fault on connection 13E between components 213 and 300. If there is a repair procedure (see **Technical Note 6015A, Repairing wiring: precautions for repair**), repair the wiring, otherwise replace it.

LIGHTING

Fault finding: Interior lights

80D

Fault finding charts

ALP 7	The rear courtesy light does not operate continuously
NOTES	Use the Wiring Diagrams Technical Note, Mégane 2 ph2. Check that the rear courtesy light comes on when a door is opened before applying this ALP. If it does not, refer to ALP5.
There is a fault on connection MAM between components 213 and 300. If there is a repair procedure (see Technical Note 6015A, Repairing wiring: precautions for repair), repair the wiring, otherwise replace it.	

LIGHTING

Fault finding: Interior lights

80D

Fault finding charts

ALP 8	The front and rear courtesy lights do not operate at all
--------------	---

NOTES	Use the Wiring Diagrams Technical Note, Mégane 2 ph2. Check that the fuses are sound.
--------------	--

Check the continuity on connection BPT between components 213 and 645.
Is the continuity good?

yes



no



Run fault finding on the UCH (see **87B, Passenger compartment connection unit**).

There is a fault on connection BPT between components 645 and 213. If there is a repair procedure (see **Technical Note 6015A, Repairing wiring: precautions for repair**), repair the wiring, otherwise replace it.

LIGHTING

Fault finding: Interior lights

80D

Fault finding charts

ALP 9	The front and rear courtesy lights do not come when a door is opened
--------------	---

NOTES	Use the Wiring Diagrams Technical Note, Mégane 2 ph2. Check that the fuses are sound. Check that the courtesy lights operate continuously before applying this ALP. If they do not, refer to ALP8.
--------------	--

Remove the front courtesy light (see MR 364, Mechanical systems, 81B, Interior lighting, Courtesy light). Check the continuity and insulation from + 12 V of connection 13E between components 213 and 645.
--

Is connection 13E sound?

yes



no



Run fault finding on the UCH (see 87B, Passenger compartment connection unit).
--

There is a fault on connection 13E between components 645 and 213 or 300. If there is a repair procedure (see **Technical Note 6015A, Repairing wiring: precautions for repair**), repair the wiring, otherwise replace it.

LIGHTING

Fault finding: Interior lights

80D

Fault finding charts

ALP 10	The front and rear courtesy lights do not go off when the doors are closed
---------------	---

NOTES	Use the Wiring Diagrams Technical Note, Mégane 2 ph2.
--------------	---

Note:

It is normal that the interior lights do not go out when the doors are being closed, but several seconds afterwards (time delay).

Remove the front courtesy light (see **MR 364, Mechanical systems, 81B, Interior lighting, Courtesy light**).
Check the continuity and insulation from earth of connection 13E between components 213 and 645.

Is connection 13E sound?

yes



Run fault finding on the UCH (see **87B, Passenger compartment connection unit**).

no



There is a fault on connection 13E between components 645 and 213 or 300. If there is a repair procedure (see **Technical Note 6015A, Repairing wiring: precautions for repair**), repair the wiring, otherwise replace it.

LIGHTING

Fault finding: Interior lights

80D

Fault finding charts

ALP 11	The front and rear courtesy lights do not operate continuously
NOTES	Use the Wiring Diagrams Technical Note, Mégane 2 ph2. Check that the fuses are sound. Check that the courtesy lights come on when a door is opened before applying this ALP. If they do not, refer to ALP8.
There is a fault on earth MAM of component 300. Check that earth MAM is connected to the chassis correctly. If this is the case and there is a repair procedure (see Technical Note 6015A, Repairing wiring: precautions for repair), repair the wiring, otherwise replace it.	

LIGHTING

Fault finding: Storage compartment

80D

Customer complaints

THE STORAGE COMPARTMENT LIGHT DOES NOT OPERATE AT ALL

ALP 1

THE STORAGE COMPARTMENT LIGHT DOES NOT GO OFF WHEN THE SWITCH IS PRESSED

ALP 2

LIGHTING

Fault finding: Storage compartment

80D

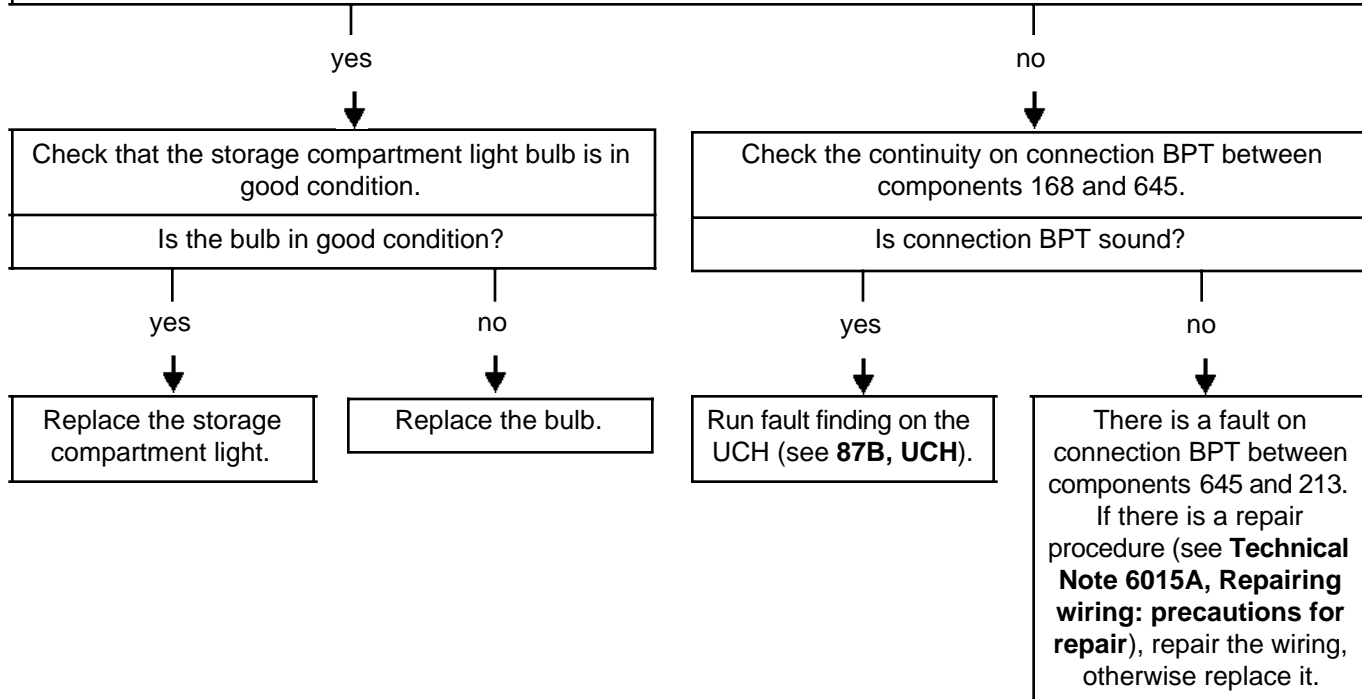
Fault finding charts

ALP 1	The storage compartment light does not operate at all
--------------	--

NOTES	Use a 12 V/5 W standard warning light bulb. Use the Wiring Diagrams Technical Note, Mégane 2 ph2.
--------------	--

Remove the storage compartment light (see **MR 364 Mechanical systems, 81B, interior lighting, storage compartment**). Check with the warning light bulb for + 12 V between connection MAN for left-hand drive or MAM for right-hand drive and connection BPT of component 168.

Does the test bulb illuminate?



LIGHTING

Fault finding: Storage compartment

80D

Fault finding charts

ALP 2	The storage compartment light does not go off when the switch is pressed
--------------	--

NOTES	Use the Wiring Diagrams Technical Note, Mégane 2 ph2.
--------------	---

Replace the storage compartment light.
--

LIGHTING

Fault finding: Lower door lights

80D

Customer complaints

THE DRIVER'S DOOR LOWER LIGHT DOES NOT OPERATE	ALP 1
THE PASSENGER'S DOOR LOWER LIGHT DOES NOT OPERATE	ALP 2
THE DRIVER'S REAR DOOR LOWER LIGHT DOES NOT OPERATE	ALP 3
THE PASSENGER'S REAR DOOR LOWER LIGHT DOES NOT OPERATE	ALP 4
THE FRONT DOOR LOWER LIGHTS DO NOT OPERATE	ALP 5
THE REAR DOOR LOWER LIGHTS DO NOT OPERATE	ALP 6
THE FRONT DOOR LOWER LIGHTS ARE PERMANENTLY ON	ALP 7
THE FRONT AND REAR DOOR LOWER LIGHTS DO NOT OPERATE	ALP 8
THE FRONT AND REAR DOOR LOWER LIGHTS ARE PERMANENTLY ON	ALP 9

LIGHTING

Fault finding: Lower door lights

80D

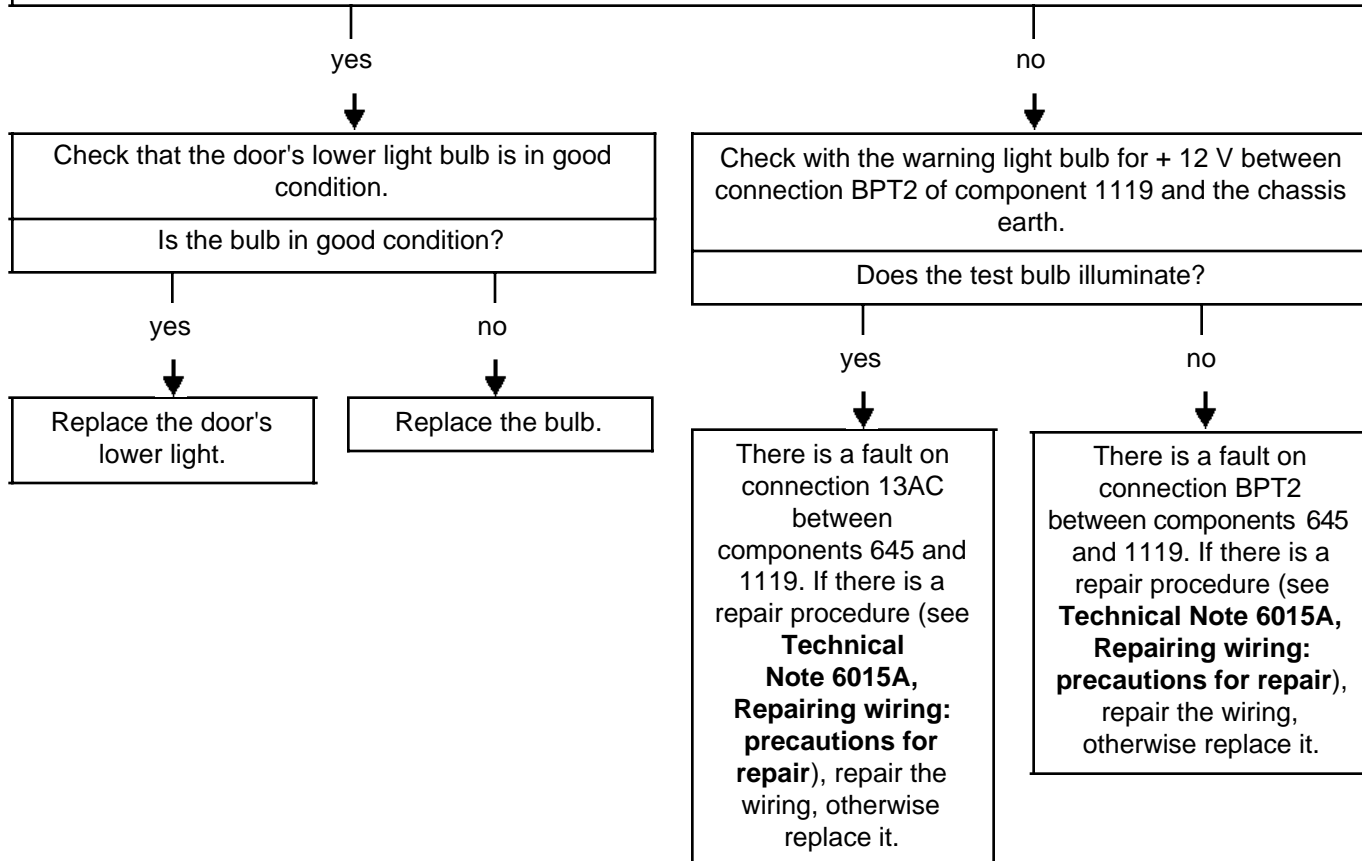
Fault finding charts

ALP 1	The driver's door lower light does not operate
--------------	---

NOTES	Use a 12 V/5 W standard warning light bulb. Use the Wiring Diagrams Technical Note, Mégane 2 ph2. Check that the passenger's door lower light operates correctly before applying this ALP. If it does not, refer to ALP5.
--------------	---

Remove the driver's door lower light (see **MR 364 Mechanical systems, 81B, interior lighting, lower door light: removal - refitting**). Open a door and check with the warning light bulb for + 12 V between connections 13AC and BPT2 of component 1119.

Does the test bulb illuminate?



LIGHTING

Fault finding: Lower door lights

80D

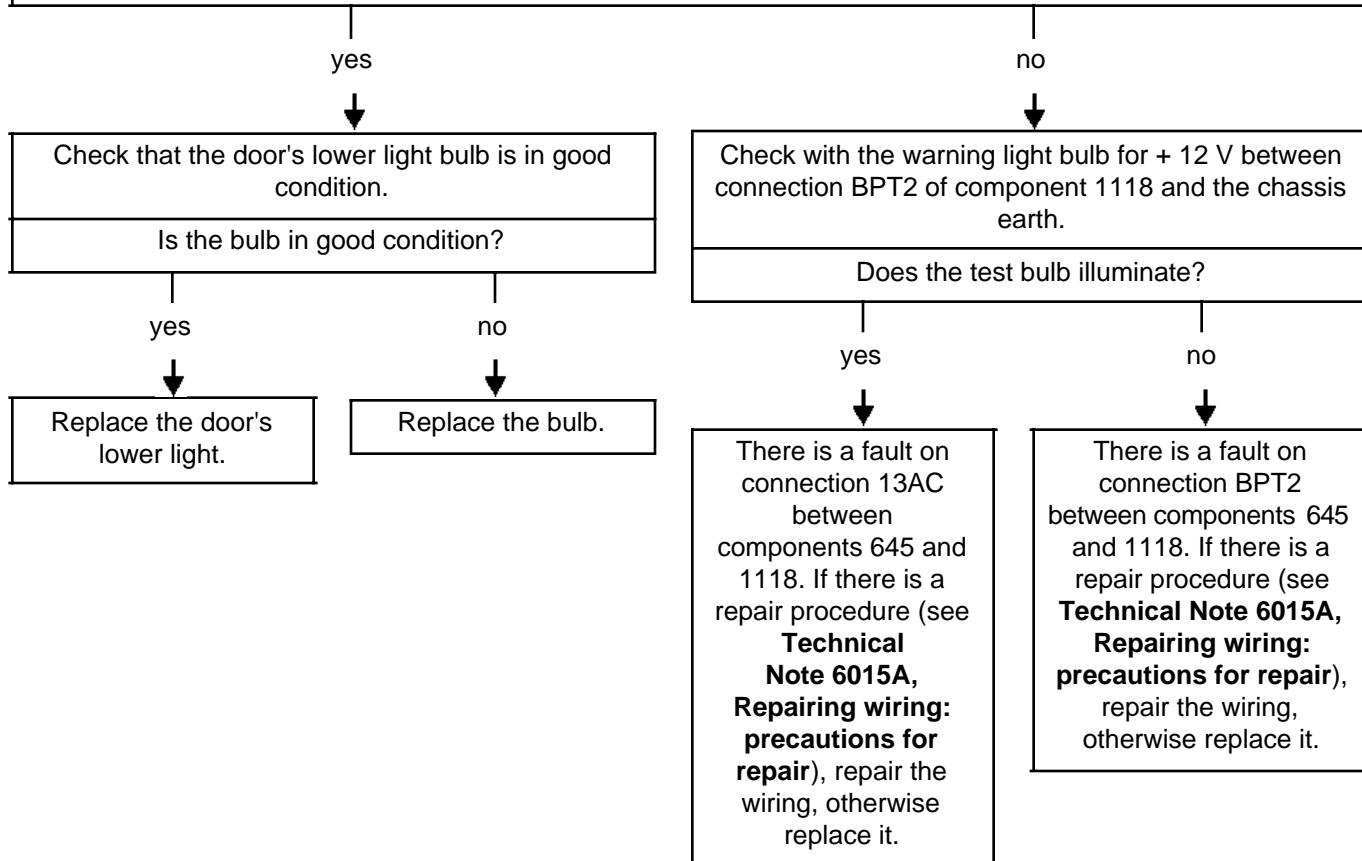
Fault finding charts

ALP 2	The passenger's door lower light does not operate
--------------	--

NOTES	Use a 12 V/5 W standard warning light bulb. Use the Wiring Diagrams Technical Note, Mégane 2 ph2. Check that the driver's door lower light operates correctly before applying this ALP. If it does not, refer to ALP5.
--------------	--

Remove the passenger's door lower light (see **MR 364 Mechanical systems, 81B, interior lighting, lower door light: removal - refitting**). Open a door and check with the warning light bulb for + 12 V between connections 13AC and BPT2 of component 1118.

Does the test bulb illuminate?



LIGHTING

Fault finding: Lower door lights

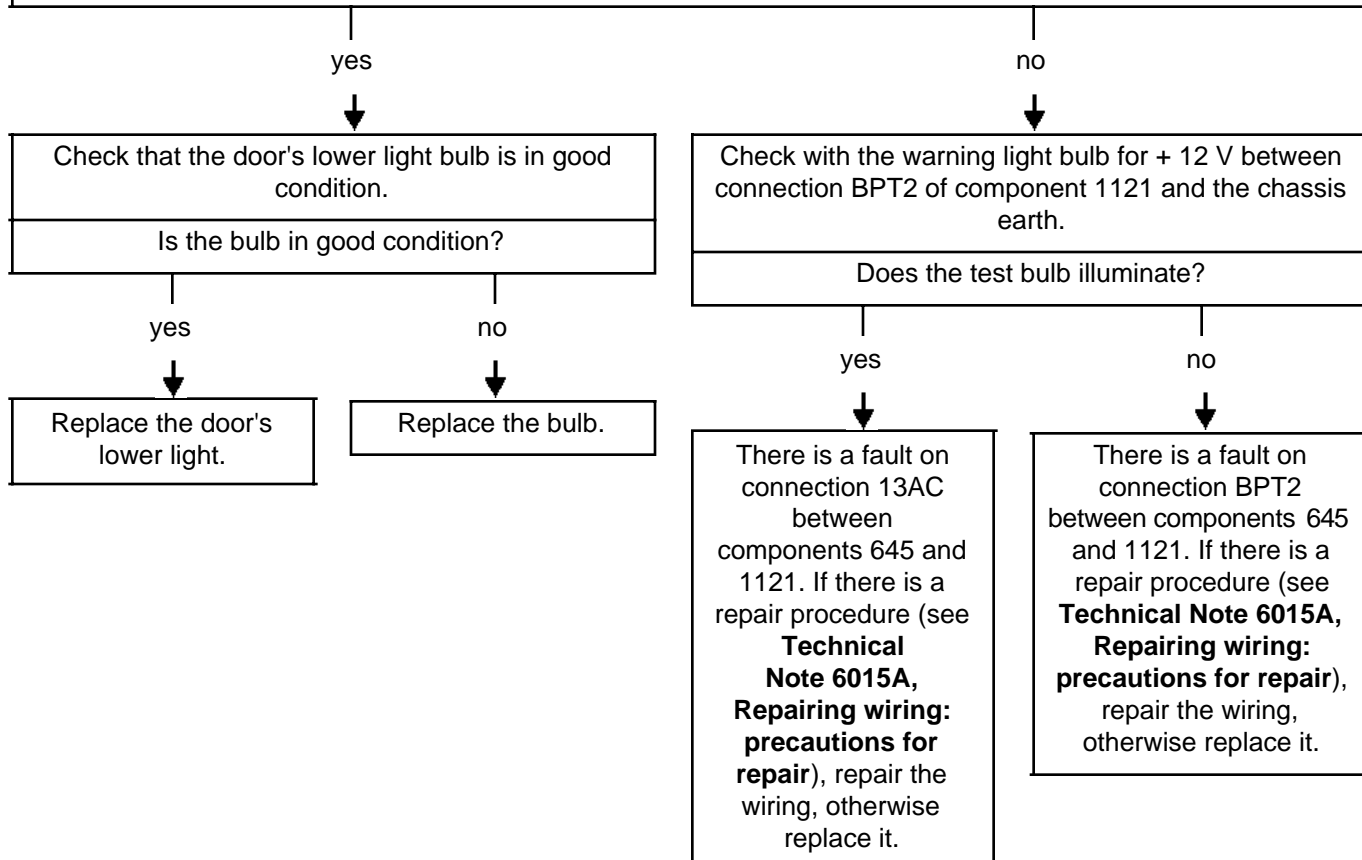
80D

Fault finding charts

ALP 3	The driver's rear door lower light does not operate
--------------	--

NOTES	<p>Use a 12 V/5 W standard warning light bulb.</p> <p>Use the Wiring Diagrams Technical Note, Mégane 2 ph2.</p> <p>Check that the passenger's rear door lower light operates correctly before applying this ALP. If it does not, refer to ALP6.</p> <p>Check that both front door lower lights operate correctly before applying this ALP. If they do not, refer to ALP8.</p>
--------------	---

<p>Remove the driver's rear door lower light (see MR 364 Mechanical systems, 81B, interior lighting, lower door light: removal - refitting). Open a door and check with the warning light bulb for + 12 V between connections 13AC and BPT2 of component 1121.</p>
Does the test bulb illuminate?



LIGHTING

Fault finding: Lower door lights

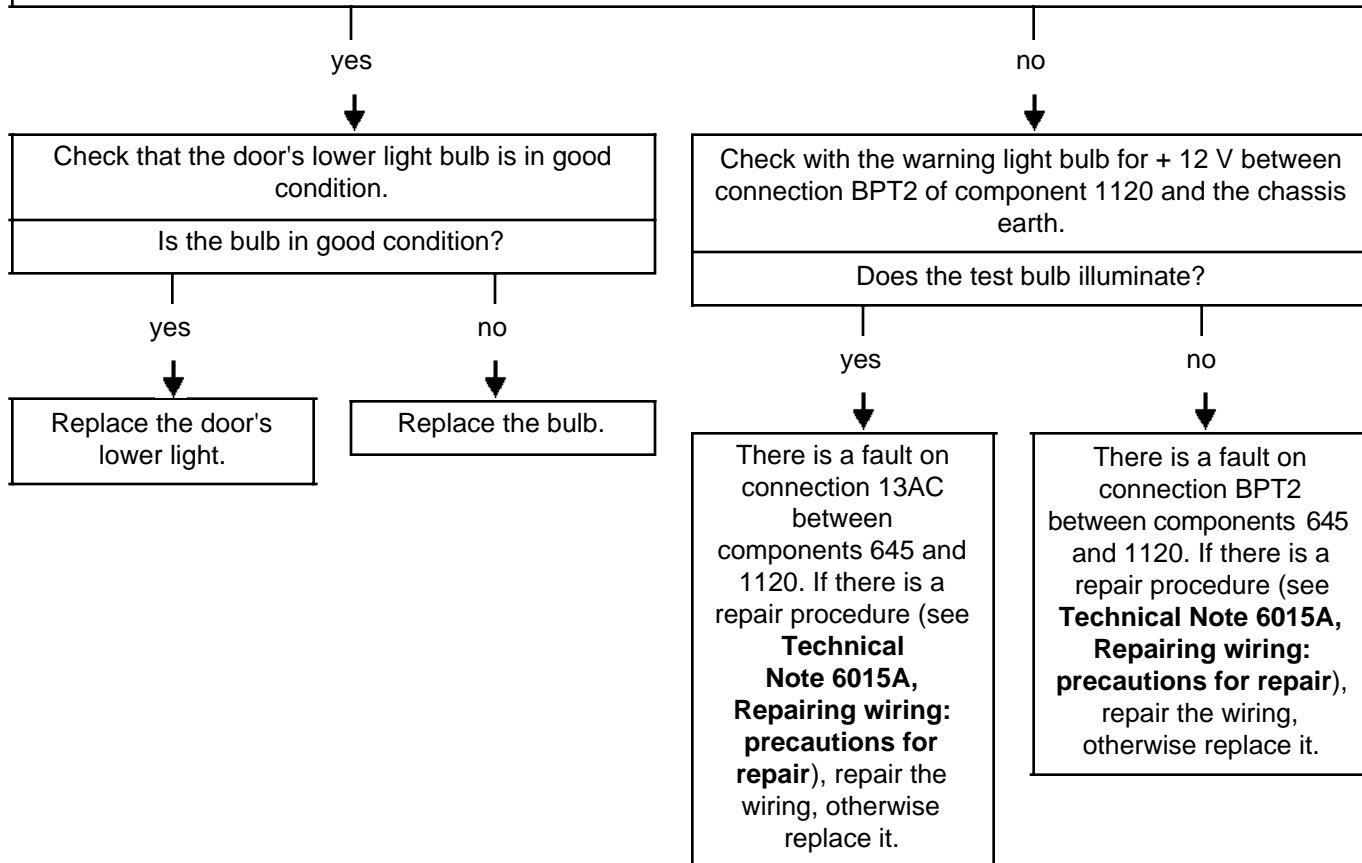
80D

Fault finding charts

ALP 4	The passenger's rear door lower light does not operate
--------------	---

NOTES	<p>Use a 12 V/5 W standard warning light bulb.</p> <p>Use the Wiring Diagrams Technical Note, Mégane 2 ph2.</p> <p>Check that the driver's rear door lower light operates correctly before applying this ALP. If it does not, refer to ALP6.</p> <p>Check that both front door lower lights operate correctly before applying this ALP. If it does not, refer to ALP8.</p>
--------------	--

<p>Remove the passenger's rear door lower light (see MR 364 Mechanical systems, 81B, interior lighting, lower door light: removal - refitting). Open a door and check with the warning light bulb for + 12 V between connections 13AC and BPT2 of component 1120.</p>
Does the test bulb illuminate?



LIGHTING

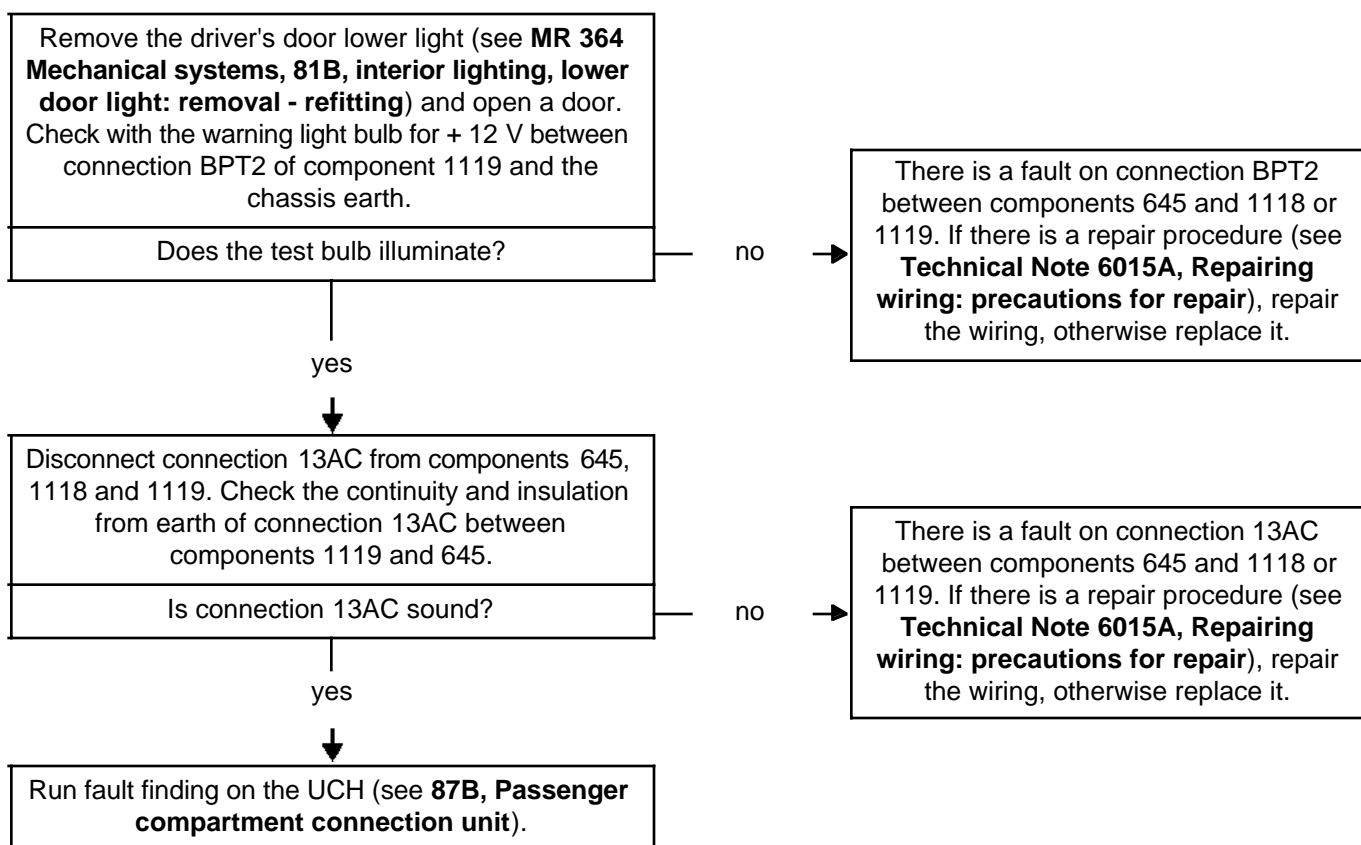
Fault finding: Lower door lights

80D

Fault finding charts

ALP 5	The front door lower lights do not operate
--------------	---

NOTES	Use a 12 V/5 W standard warning light bulb. Use the Wiring Diagrams Technical Note, Mégane 2 ph2. Check that the fuses are sound. If the vehicle is fitted with rear lower door lights, refer to ALP8.
--------------	---



LIGHTING

Fault finding: Lower door lights

80D

Fault finding charts

ALP 6	The rear door lower lights do not operate
--------------	--

NOTES	Use a 12 V/5 W standard warning light bulb. Use the Wiring Diagrams Technical Note, Mégane 2 ph2. Check that the fuses are sound. Check that both front door lower lights operate correctly before applying this ALP. If it does not, refer to ALP8.
--------------	---

Remove the driver's rear door lower light (see **MR 364 Mechanical systems, 81B, interior lighting, lower door light: removal - refitting**). Open a door and check with the warning light bulb for + 12 V between connection BPT2 of component 1121 and the chassis earth.

Does the test bulb illuminate?

yes



There is a fault on connection 13AC between components 645 and 1121. If there is a repair procedure (see **Technical Note 6015A, Repairing wiring: precautions for repair**), repair the wiring, otherwise replace it.

no



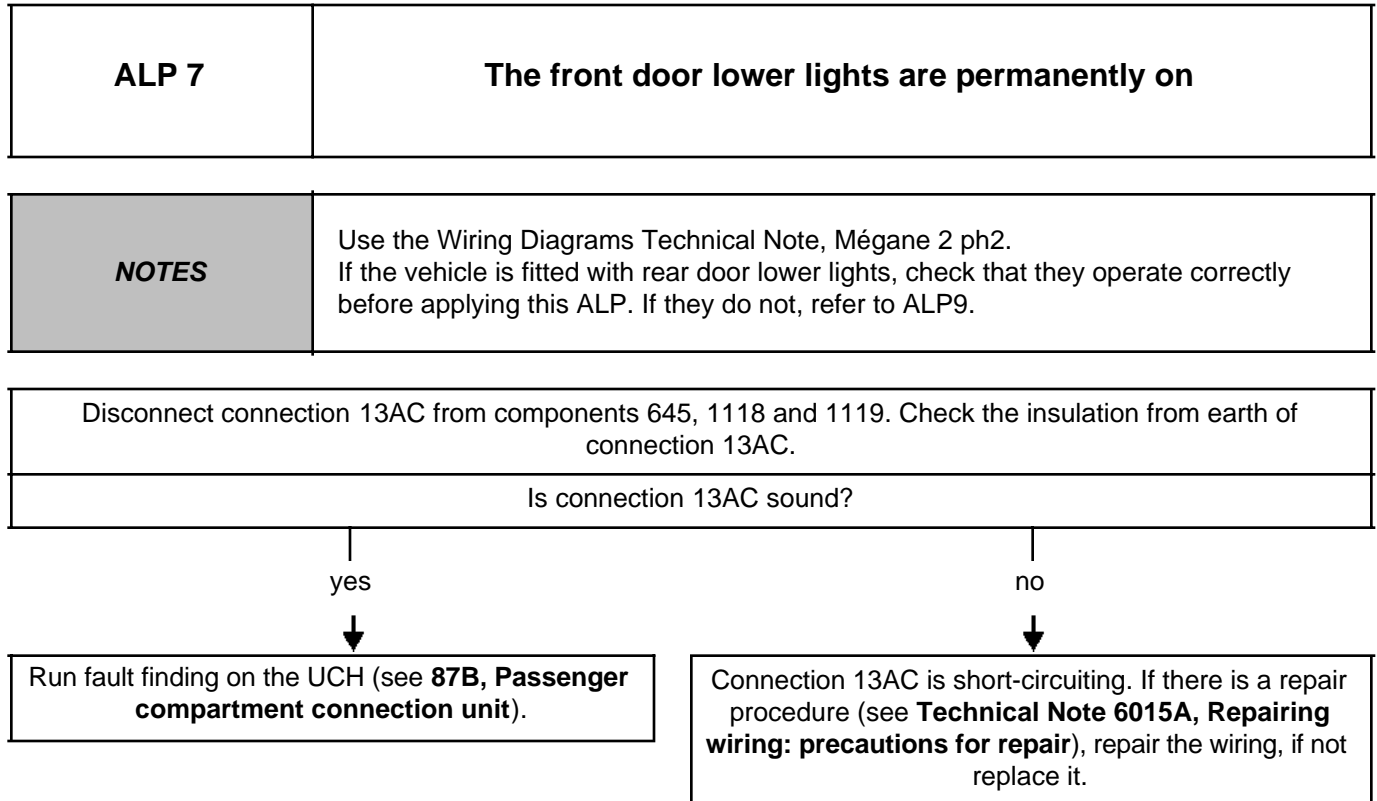
There is a fault on connection BPT2 between components 645 and 1121. If there is a repair procedure (see **Technical Note 6015A, Repairing wiring: precautions for repair**), repair the wiring, otherwise replace it.

LIGHTING

Fault finding: Lower door lights

80D

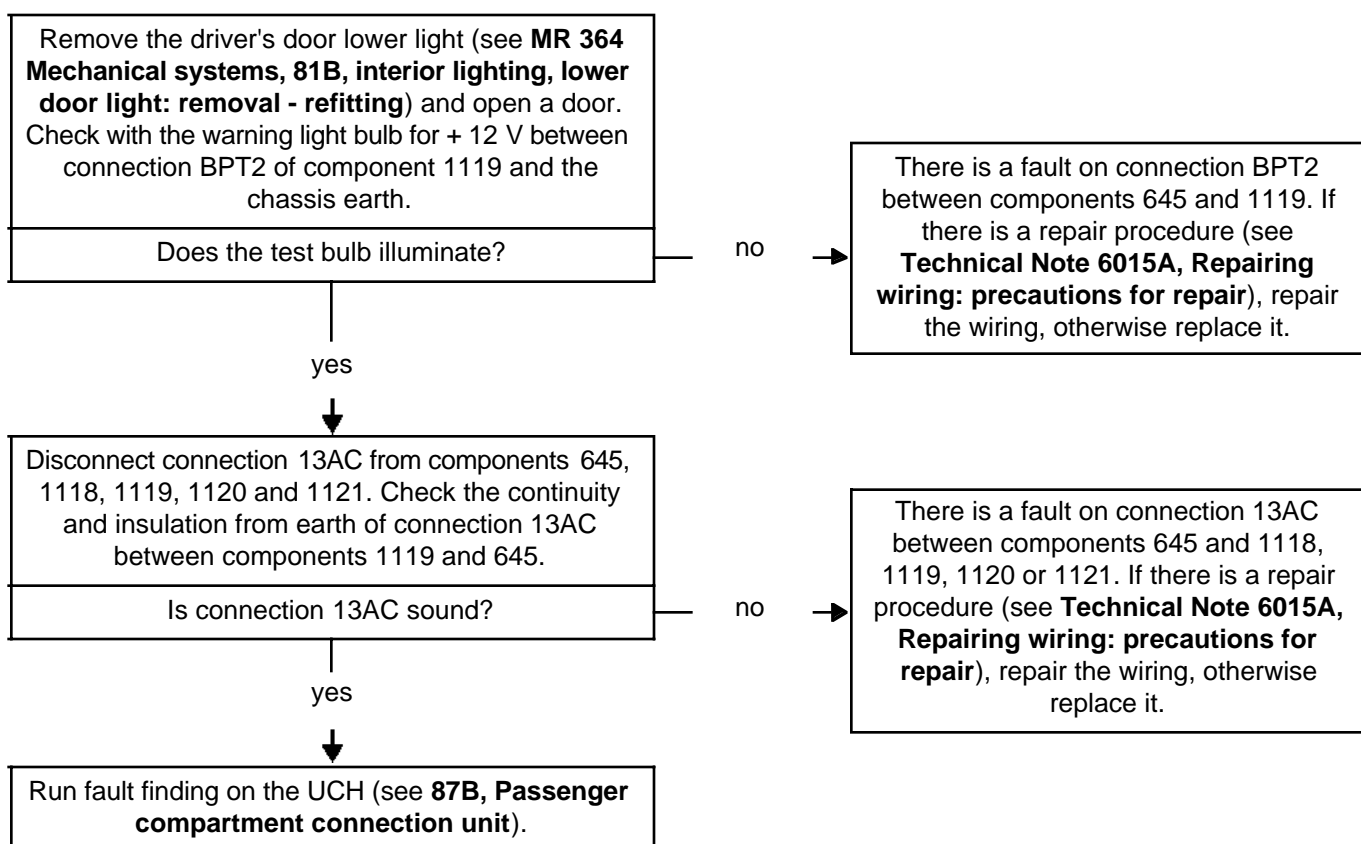
Fault finding charts



Fault finding charts

ALP 8	The front and rear lower door lights do not operate
-------	---

NOTES	<p>Use a 12 V/5 W standard warning light bulb.</p> <p>Use the Wiring Diagrams Technical Note, Mégane 2 ph2.</p> <p>Check that the fuses are sound.</p>
--------------	--



LIGHTING

Fault finding: Lower door lights

80D

Fault finding charts

ALP 9	The front and rear lower door lights are permanently on
--------------	--

NOTES	Use the Wiring Diagrams Technical Note, Mégane 2 ph2.
--------------	---

Disconnect connection 13AC from components 645, 1118, 1119, 1120 and 1121. Check the insulation from earth of connection 13AC.

Is connection 13AC sound?

yes
↓

no
↓

Run fault finding on the UCH (see **87B, Passenger compartment connection unit**).

Connection 13AC is short-circuiting. If there is a repair procedure (see **Technical Note 6015A, Repairing wiring: precautions for repair**), repair the wiring, if not replace it.

Customer complaints

THE HEADLIGHT BEAM ADJUSTMENT DOES NOT OPERATE	ALP 1
THE LEFT-HAND HEADLIGHT BEAM ADJUSTMENT DOES NOT OPERATE	ALP 2
THE RIGHT-HAND HEADLIGHT BEAM ADJUSTMENT DOES NOT OPERATE	ALP 3
THE HEADLIGHT BEAM ADJUSTMENT DOES NOT OPERATE IN CERTAIN CONTROL POSITIONS	ALP 4

LIGHTING

Fault finding: Headlight beam adjustment

80D

Fault finding charts

ALP 1	The headlight beam adjustment does not operate
--------------	---

NOTES	Use the Wiring Diagrams Technical Note, Mégane 2 ph2. Check that the fuses are sound. The ALP must be carried out with the engine running.
--------------	--

Remove the headlight beam adjustment control (see **MR 364 mechanical systems, 80B, headlights, headlight beam adjustment control: removal - refitting**) without disconnecting it and switch on the dipped headlights. Use a voltmeter to measure the voltage between connection CPD and MAM for left-hand drive or MAN for right-hand drive of component 1390.

Is the voltage approximately 12 V?

yes

no

Put the headlight beam adjustment control in position 2 and use a voltmeter to measure the voltage between connection 103A of component 537 and the chassis earth.



Is the voltage greater than 4V?

yes

no

There is a fault on earth MAM of component 537. Check that the earth is connected to the chassis correctly. If this is the case and there is a repair procedure (see **Technical Note 6015A, Repairing wiring: precautions for repair**), repair the wiring, otherwise replace it.

Use a voltmeter to measure the voltage between connection 103A of component 1390 and the chassis earth.

Is the voltage greater than 4V?

no

yes

Replace the headlight beam adjustment control

There is a fault on connection 103A between components 1390 and 537 or 538. If there is a repair procedure (see **Technical Note 6015A, Repairing wiring: precautions for repair**), repair the wiring, otherwise replace it.

ALP 1 CONTINUED



Use a voltmeter to measure the voltage between connection CPD of component 1390 and the chassis earth.

Is the voltage approximately 12 V?

yes



There is a fault on earth MAM or MAN of component 1390. Check that the earth is connected to the chassis correctly. If this is the case and there is a repair procedure (see **Technical Note 6015A, Repairing wiring: precautions for repair**), repair the wiring, otherwise replace it.

no



Check the continuity on connection CBD between components 1337 and 1390.

Is connection CPD sound?

yes



Run fault finding on the Protection and Switching Unit (see **87G, engine compartment connection unit**).

no



There is a fault on connection CPD between components 1337 and 1390. If there is a repair procedure (see **Technical Note 6015A, Repairing wiring: precautions for repair**), repair the wiring, otherwise replace it.

LIGHTING

Fault finding: Headlight beam adjustment

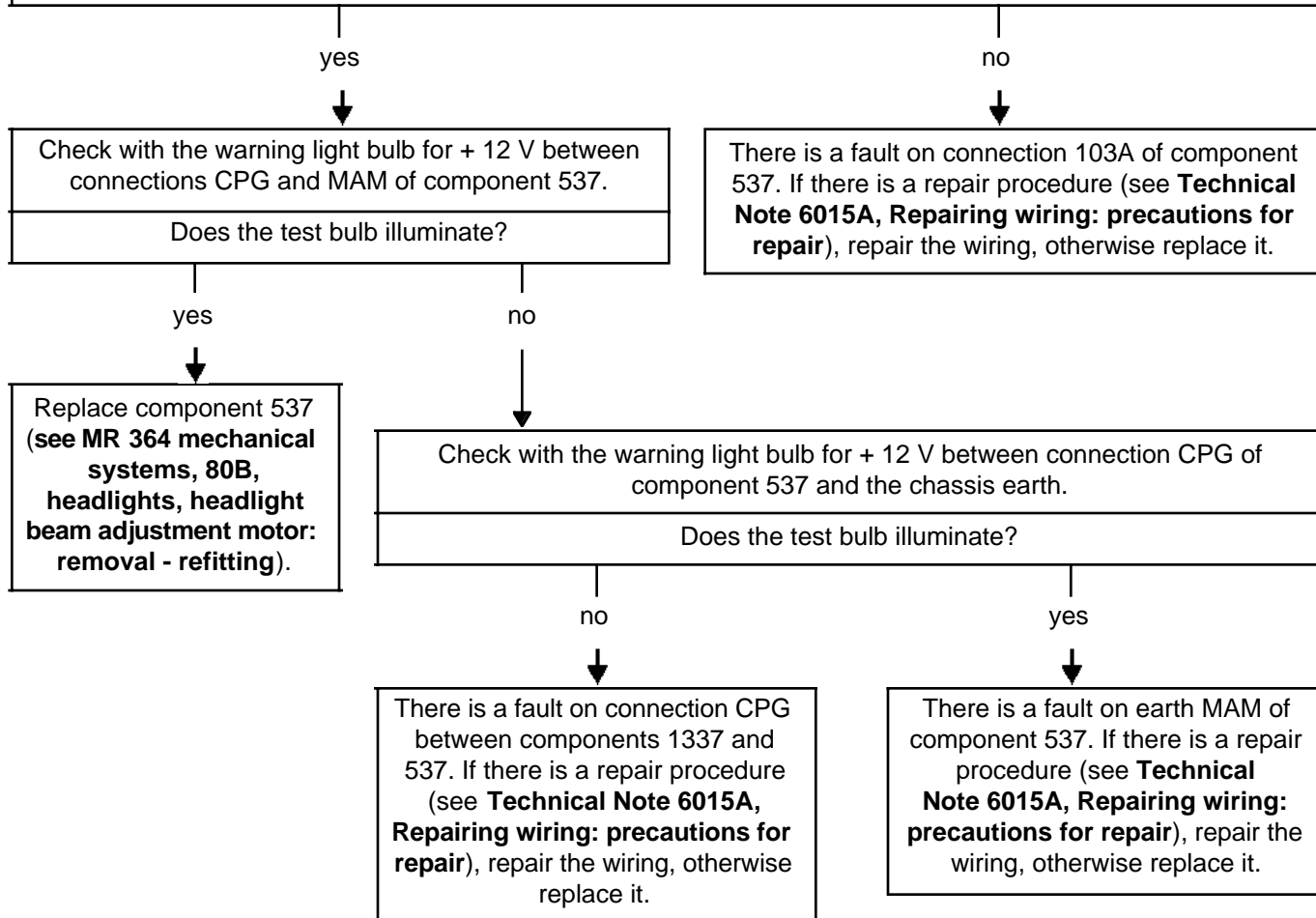
80D

Fault finding charts

ALP 2	The left-hand headlight beam adjustment does not operate
--------------	---

NOTES	<p>Use a 12 V/5 W standard warning light bulb.</p> <p>Use the Wiring Diagrams Technical Note, Mégane 2 ph2.</p> <p>Check that the fuses are sound.</p> <p>The ALP must be carried out with the engine running.</p> <p>Check that the right-hand headlight beam adjustment operates correctly before applying this ALP. If it does not, refer to ALP1.</p>
--------------	---

<p>Put the headlight beam adjustment control in position 2 and switch on the dipped headlights.</p> <p>Use a voltmeter to measure the voltage between connection 103A of component 537 and the chassis earth.</p>
Is the voltage greater than 4V?



LIGHTING

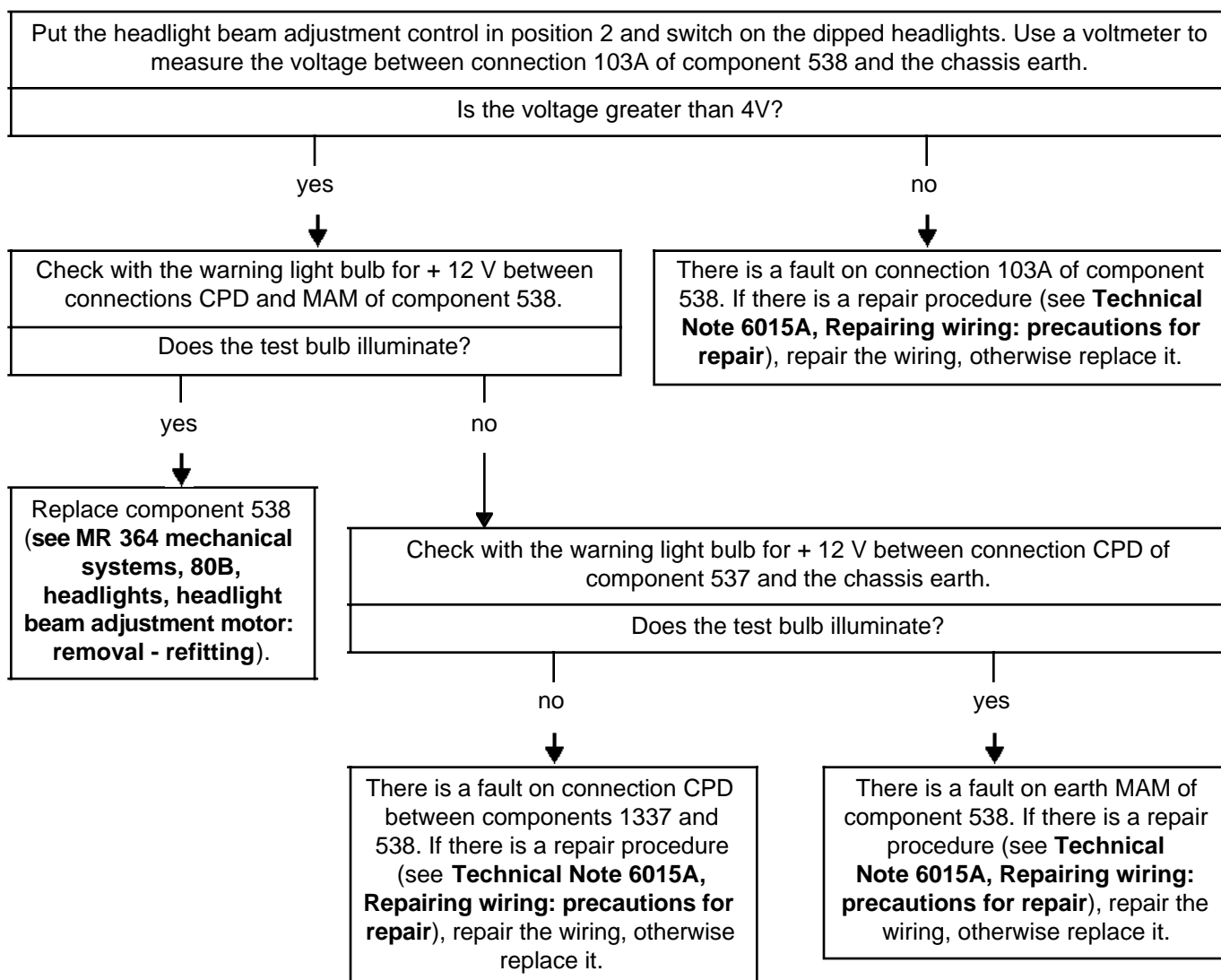
Fault finding: Headlight beam adjustment

80D

Fault finding charts

ALP 3	The right-hand headlight beam adjustment does not operate
--------------	--

NOTES	<p>Use a 12 V/5 W standard warning light bulb.</p> <p>Use the Wiring Diagrams Technical Note, Mégane 2 ph2.</p> <p>Check that the fuses are sound.</p> <p>The ALP must be carried out with the engine running.</p> <p>Check that the left-hand headlight beam adjustment operates correctly before applying this ALP. If it does not, refer to ALP1.</p>
--------------	--



Fault finding charts

ALP 4	The headlight beam adjustment does not operate in certain control positions.
--------------	---

NOTES	Check that the headlight beam adjustment operates in certain positions before applying this ALP. If it does not, refer to ALP1.
--------------	---

Replace the headlight beam adjustment control (see **MR 364 mechanical systems, 80B, headlights, headlight beam adjustment control: removal - refitting**).

